

# MONTHLY MEMBERSHIP PROGRESS REPORT

District 105 A

Results as of: 6/30/2024

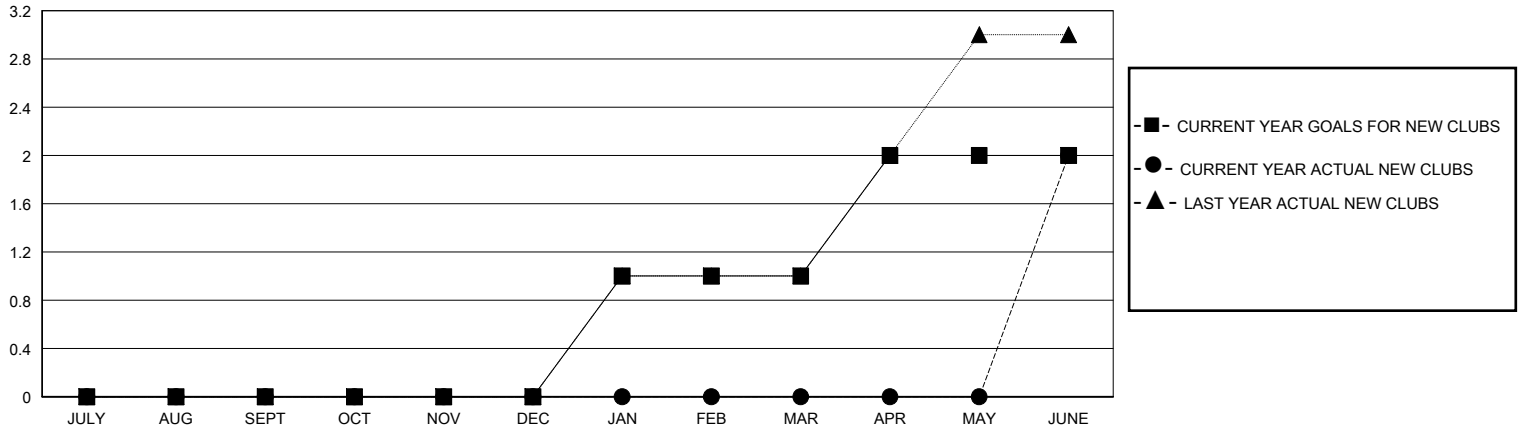
GMT:

LOCATION UNITED KINGDOM

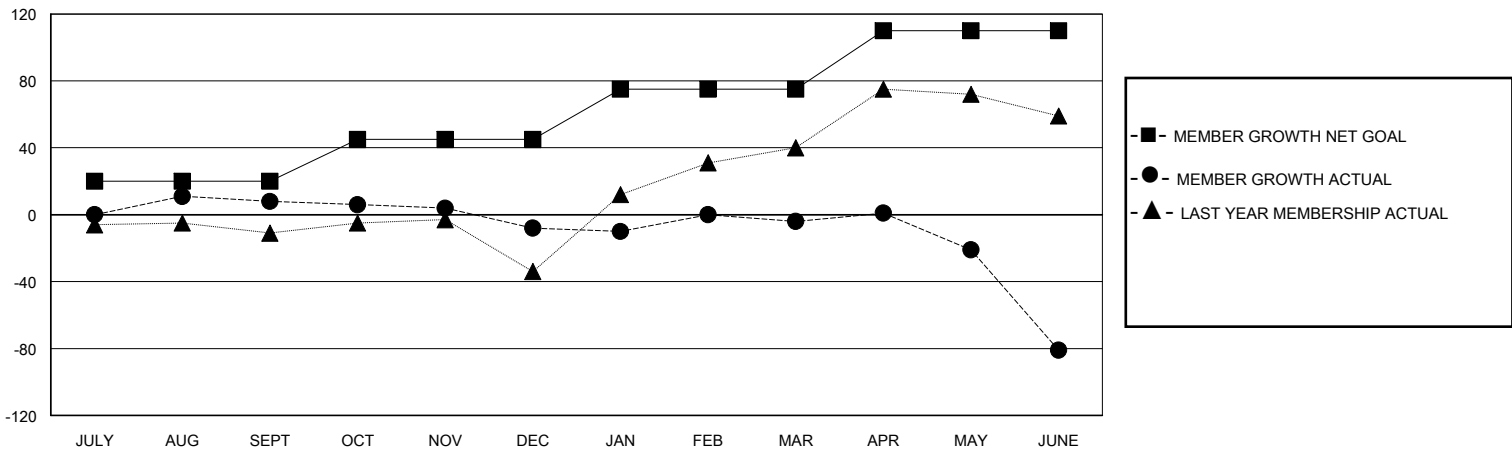
GMT CA

Clubs				Members			
RESULTS FOR 2023-2024				RESULTS FOR 2023-2024			
QUARTER	NEW CLUB GOAL	NEW CLUBS	DROPPED CLUBS	QUARTER	MEMBER GROWTH NET GOAL	MEMBER GROWTH ACTUAL	DROPPED MEMBERS ACTUAL (including transfers)
JULY/AUG/SEPT	0	0	0	JULY/AUG/SEPT	20	36	27
OCT/NOV/DEC	0	0	0	OCT/NOV/DEC	25	23	37
JAN/FEB/MAR	1	0	0	JAN/FEB/MAR	30	22	16
APR/MAY/JUNE	1	2	1	APR/MAY/JUNE	35	91	155

GOALS AND ACTUAL NEW CLUBS CUMULATIVE



GOALS AND ACTUAL MEMBERS CUMULATIVE



DROPPED CLUBS: 1	38 CLUBS OF 67 ADDED 1 OR MORE NEW MEMBERS	<b>GENDER DISTRIBUTION</b> MALE 861 (71.27%) FEMALE 347 (28.73%)
<b>DROPPED MEMBERS</b> DECEASED 16 CLUB CANCELLED 0 OTHER 219 TOTAL 235	<a href="#">CLICK HERE FOR CUMULATIVE MEMBERSHIP DATA</a>	TOTAL FAMILY UNIT MEMBERS 121 FAMILY MEMBERS PAYING HALF DUES 61